



Cambridge International AS & A Level

GEOGRAPHY

9696/43

Paper 4 Advanced Human Geography Options

May/June 2024

INSERT

1 hour 30 minutes

INFORMATION

- This insert contains all the resources referred to in the questions.
- You may annotate this insert and use the blank spaces for planning. **Do not write your answers** on the insert.



This document has **8** pages. Any blank pages are indicated.

Fig. 1.1 for Question 1

Percentage change in manufacturing jobs, by level of education, in the UK,
an HIC in Europe, 2012–17

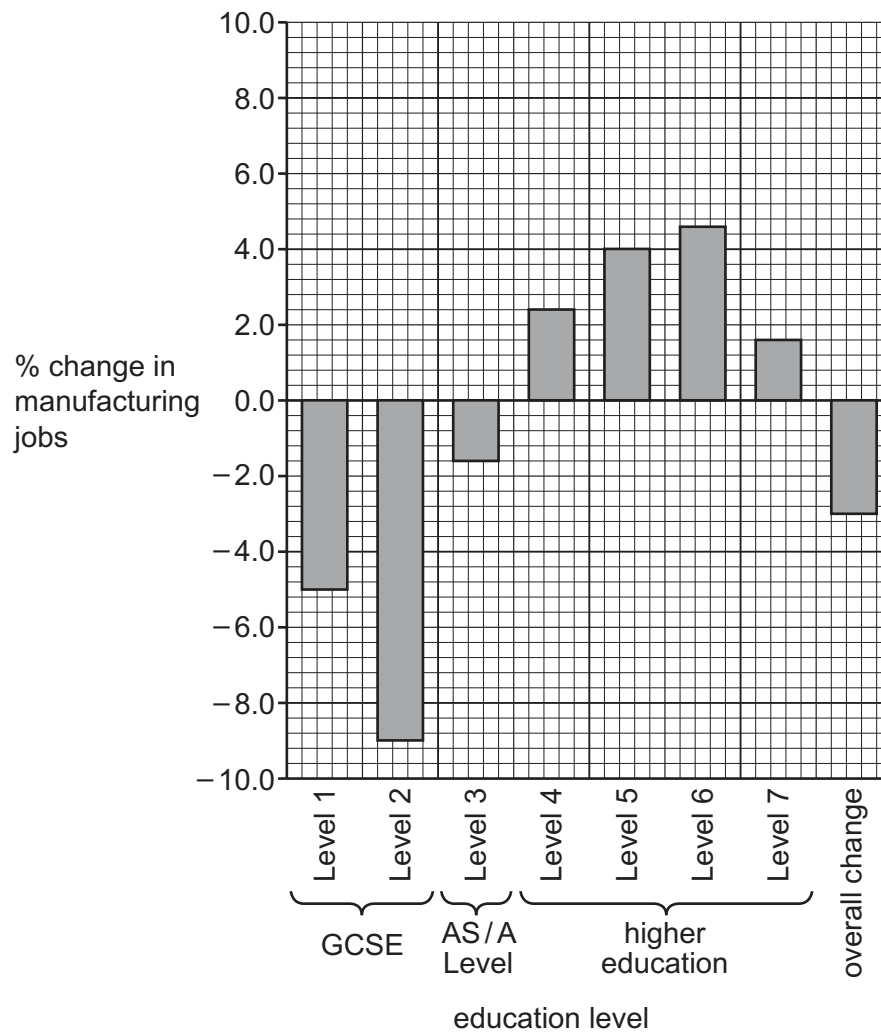
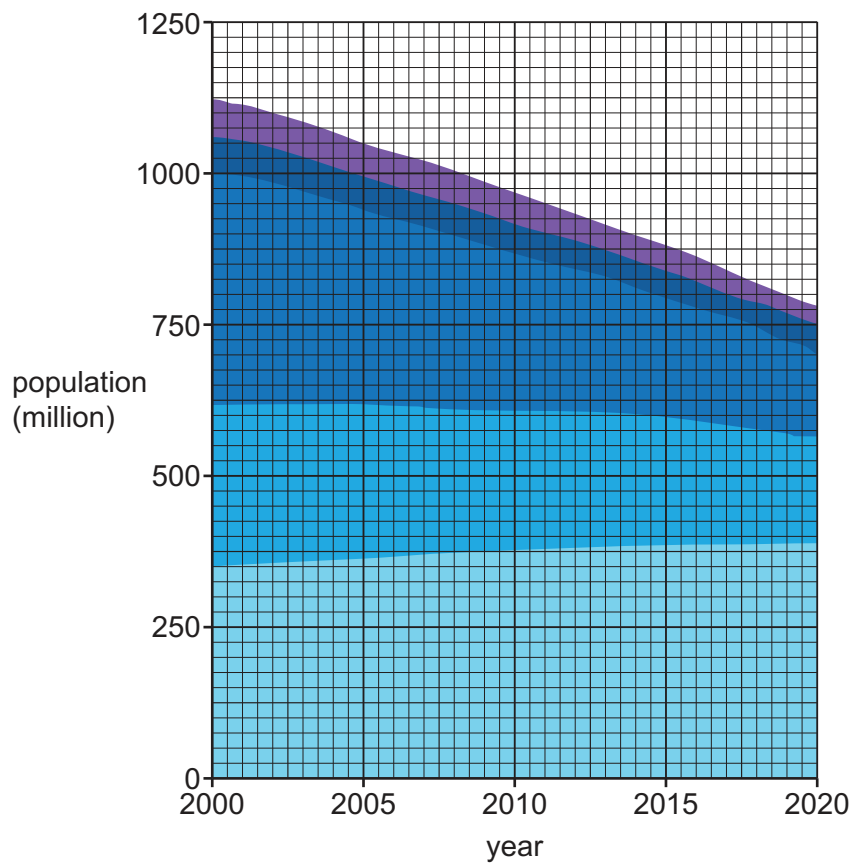


Fig. 4.1 for Question 4

Population without basic drinking water services*, by world region, 2000–20

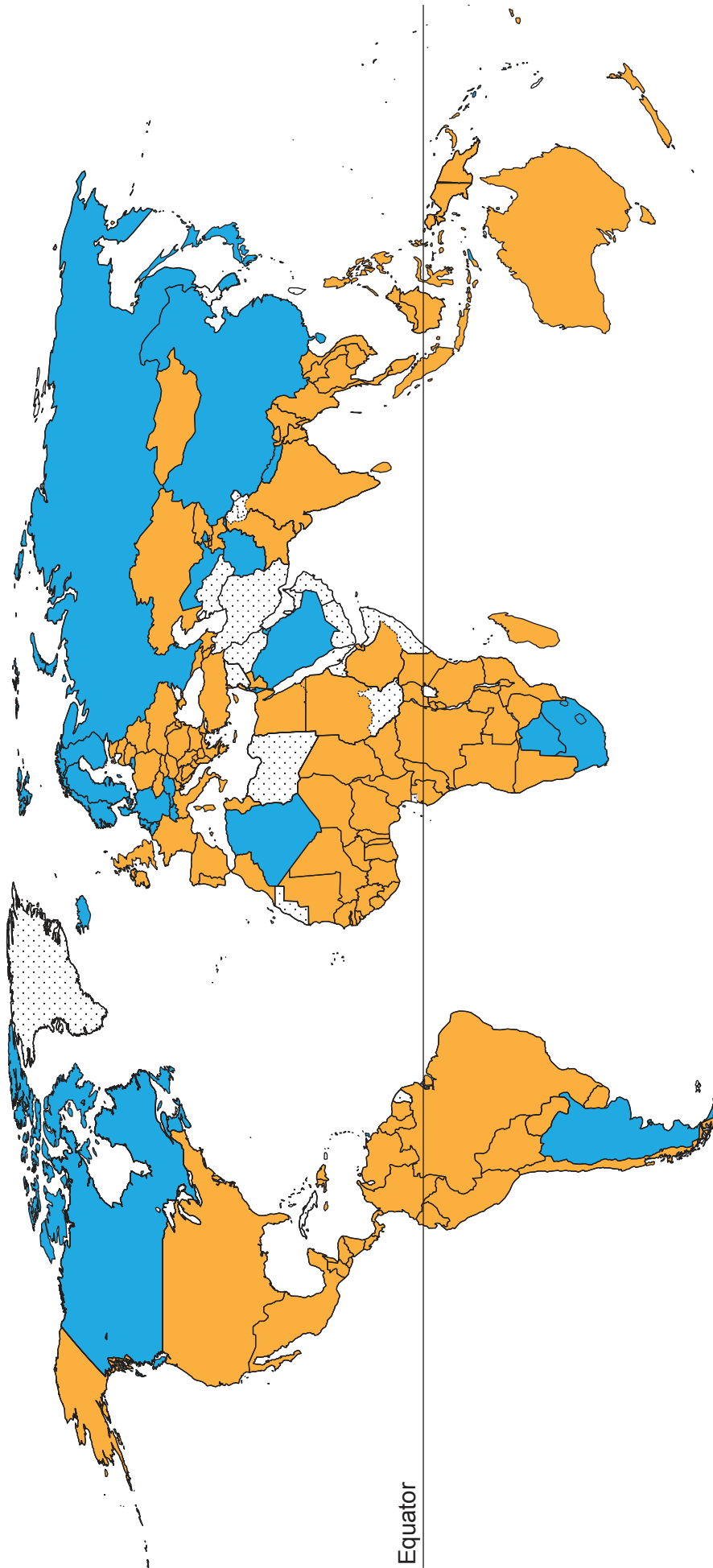
**Key**

world region

- rest of world
- North Africa and West Asia
- East Asia and Southeast Asia
- Central Asia and South Asia
- Sub-Saharan Africa

* A basic drinking water service is access to an improved quality of water with a maximum collection time of 30 minutes.

Fig. 7.1 for Question 7



* Net debtor status is where the debt owed to a country (government and public debt) is less than the debt owed by the country.

**** Net creditor status is where the debt owed to a country (government and public debt) is greater than the debt owed by the country.**

Key

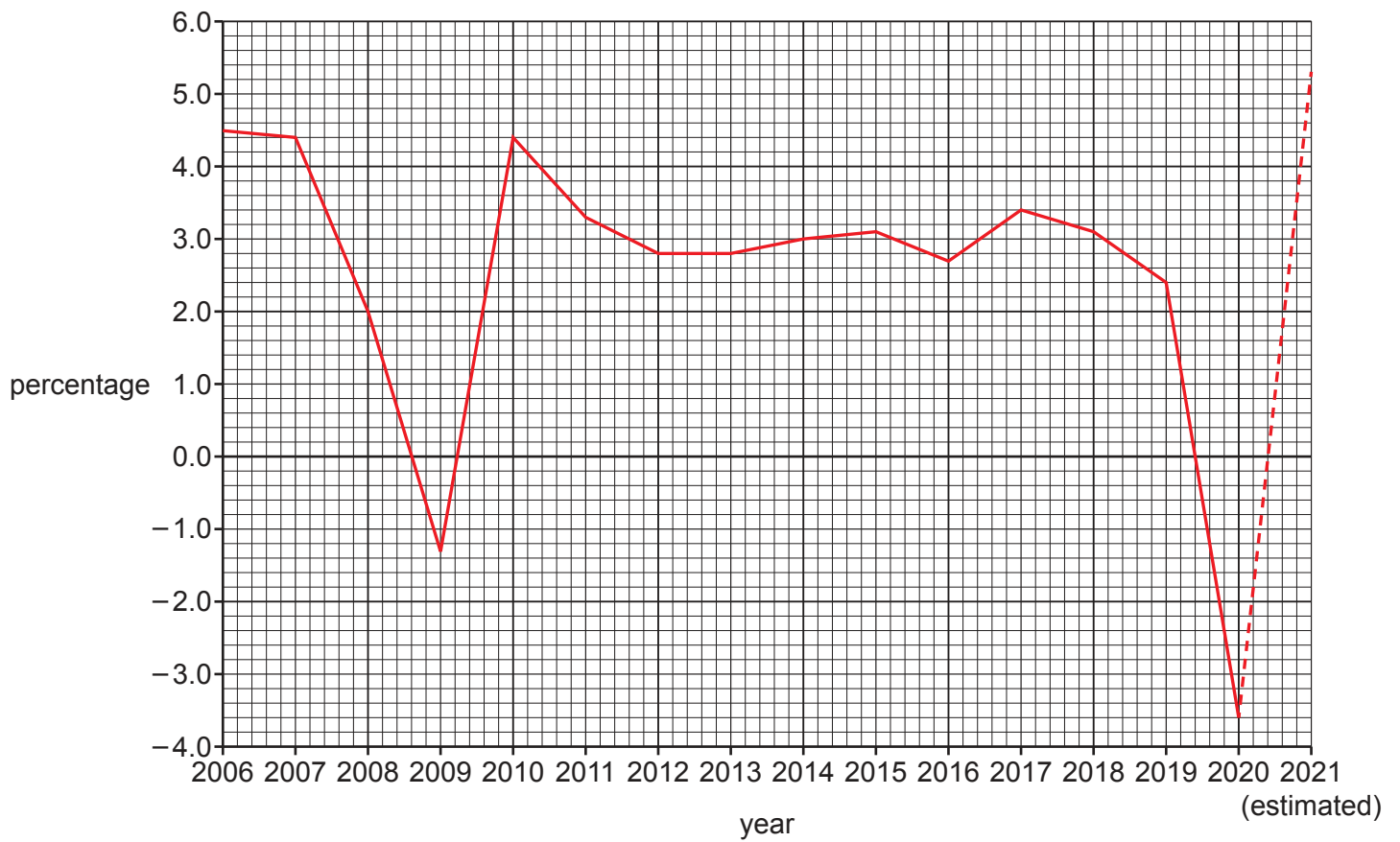
net debtor

net creditor

no data

Fig. 10.1 for Question 10

**Annual growth rate of world real gross domestic product (GDP)*, 2006–20
and estimated to 2021**



* Real GDP is the value of goods and services produced taking into account changing prices to remove the effect of rising prices over time (otherwise known as 'inflation').

BLANK PAGE

The boundaries and names shown, the designations used and the presentation of material on any maps contained in this question paper/insert do not imply official endorsement or acceptance by Cambridge Assessment International Education concerning the legal status of any country, territory, or area or any of its authorities, or of the delimitation of its frontiers or boundaries.

Permission to reproduce items where third-party owned material protected by copyright is included has been sought and cleared where possible. Every reasonable effort has been made by the publisher (UCLES) to trace copyright holders, but if any items requiring clearance have unwittingly been included, the publisher will be pleased to make amends at the earliest possible opportunity.

To avoid the issue of disclosure of answer-related information to candidates, all copyright acknowledgements are reproduced online in the Cambridge Assessment International Education Copyright Acknowledgements Booklet. This is produced for each series of examinations and is freely available to download at www.cambridgeinternational.org after the live examination series.

Cambridge Assessment International Education is part of Cambridge Assessment. Cambridge Assessment is the brand name of the University of Cambridge Local Examinations Syndicate (UCLES), which is a department of the University of Cambridge.